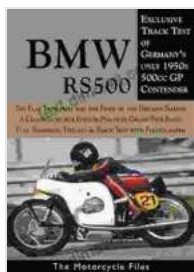


BMW RS500 Grand Prix Racer 1955-58: The Ultimate Racing Machine

The BMW RS500 Grand Prix Racer was a dominant force in motorcycle racing during the late 1950s. With its powerful engine, lightweight chassis, and advanced suspension, the RS500 was able to outpace and outmaneuver its rivals on the track. It was ridden by some of the most legendary riders of the era, including John Surtees, Walter Zeller, and Ernst Degner.



BMW RS500 GRAND PRIX RACER (1955-58): A WORLD CHAMPIONSHIP CHALLENGER FROM BAVARIA (The Motorcycle Files) by Umberto Miletto

★★★★☆ 4.5 out of 5

Language	: English
File size	: 2888 KB
Text-to-Speech	: Enabled
Screen Reader	: Supported
Enhanced typesetting	: Enabled
Word Wise	: Enabled
Print length	: 62 pages
Lending	: Enabled



The RS500 was developed by BMW in response to the growing popularity of Grand Prix motorcycle racing. The company had a long history of success in motorcycle racing, but its previous machines had not been able to compete with the dominant Italian and British bikes. The RS500 was

designed to change that, and it quickly proved to be a formidable competitor.

The RS500 was powered by a 499cc single-cylinder engine that produced over 50 horsepower. This was a significant amount of power for a motorcycle of its time, and it gave the RS500 a top speed of over 140 miles per hour. The engine was mounted in a lightweight chassis that was made of aluminum and magnesium. This gave the RS500 a very low weight-to-power ratio, which made it extremely agile and responsive.

The RS500 also featured advanced suspension that was designed to keep the bike planted on the track even at high speeds. The front suspension was a telescopic fork, while the rear suspension was a swingarm with twin shock absorbers. This suspension system allowed the RS500 to handle bumps and dips in the track without losing stability.

The RS500 was a very successful racing motorcycle. It won numerous races and championships throughout its career. In 1956, John Surtees won the World Championship on an RS500. This was the first time that a German rider had won the World Championship. The RS500 also won the Isle of Man TT in 1957 and 1958.

The RS500 was retired from racing in 1958. By that time, it had become obsolete as newer and faster motorcycles were being developed. However, the RS500 remains one of the most iconic racing motorcycles of all time. It is a testament to the engineering prowess of BMW and the skill of the riders who raced it.

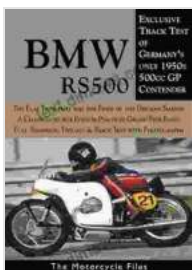
Specifications of the BMW RS500 Grand Prix Racer

- Engine: 499cc single-cylinder
- Power: 50 horsepower
- Top speed: Over 140 miles per hour
- Weight: 290 pounds
- Chassis: Aluminum and magnesium
- Suspension: Telescopic fork (front), swingarm with twin shock absorbers (rear)

Legendary riders of the BMW RS500 Grand Prix Racer

- John Surtees
- Walter Zeller
- Ernst Degner

The BMW RS500 Grand Prix Racer was one of the most successful racing motorcycles of its era. It was a powerful, lightweight, and agile machine that was ridden by some of the most legendary riders of the time. The RS500 won numerous races and championships, and it helped to establish BMW as a major force in motorcycle racing.



BMW RS500 GRAND PRIX RACER (1955-58): A WORLD CHAMPIONSHIP CHALLENGER FROM BAVARIA (The Motorcycle Files) by Umberto Miletto

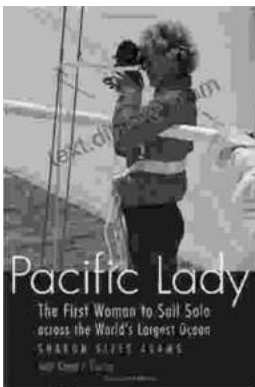
★★★★☆ 4.5 out of 5

Language : English
 File size : 2888 KB
 Text-to-Speech : Enabled
 Screen Reader : Supported
 Enhanced typesetting: Enabled

Word Wise : Enabled
Print length : 62 pages
Lending : Enabled

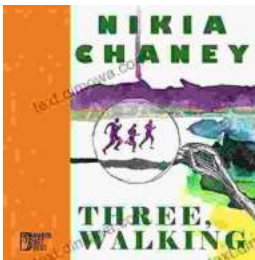
FREE

DOWNLOAD E-BOOK



The First Woman To Sail Solo Across The World's Largest Ocean Outdoor Lives

Krystyna Chojnowska-Liskiewicz is a Polish sailor who became the first woman to sail solo across the world's largest ocean, the Pacific Ocean. Her...



Three Walking: An Immersive Journey into the Heart of Human Experience

Immerse yourself in the enchanting world of "Three Walking" by Nikia Chaney, a captivating novel that transports you through time and space, delving into the...